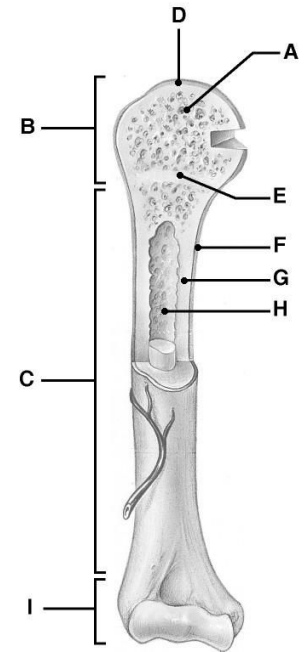


38 multiple choice (1 point each), 26 bones to name and identify (2 points each), 1 Free Response (10 points), and may answer an extra for free response for 5 points

1. Identify the parts of a long bone and the function of each part - refer to the structure to the right.
2. What minerals are stored in bone?
3. What are the classifications of bone? Be able to identify examples
4. Compare yellow marrow vs red marrow
5. What are the bones of the appendicular skeleton?
6. What are the bones of the axial skeleton?
7. Bone remodeling - when and where
8. Stages of healing of a bone fracture
9. What are the types of fractures?
10. What are the types of joints?
11. Know the following terms AND how it relates to the system
 - a. Osteon
 - b. Articular Cartilage
 - c. Epiphyseal plate
 - d. Canaliculus
 - e. Osteoblasts
 - f. Fossa
 - g. Foramen
 - h. Osteon
 - i. Lacunae
 - j. Lamellae
 - k. Fontanel
 - l. Ossification
 - m. Parathyroid hormone
 - n. Osteoblasts
 - o. Osteoclasts



12. Know the names and classification of specific bones
13. Explain at least three functions of the skeletal system.
14. List at least three features of a female pelvis that makes it different from a male pelvis.

