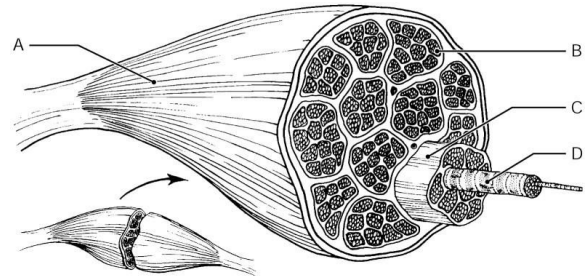
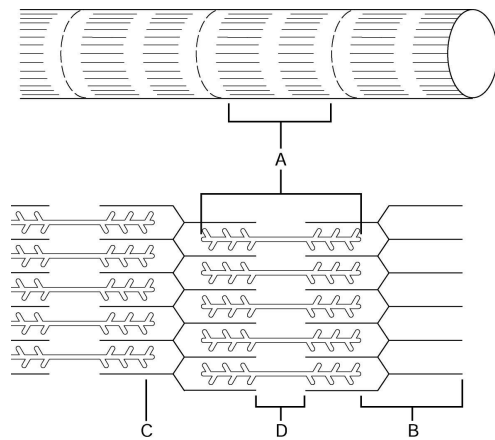


35 multiple choice (2pts each), 15 muscle identification on diagram (2pts each) (word bank provided) STUDY pgs 81-82

1. Label the diagrams



2. The characteristics of the three types of muscle tissue
3. List the functions of the system
4. Put the following structures of the skeletal muscle in order from largest to smallest: fascicle, muscle fiber (cell), myofibril, myofilament, sarcomere
5. What generates the mechanical force of contraction
6. What is the fastest way to regenerate ATP
7. Criteria for naming muscles
8. Define the following and know how it relates to the system
 - a. Acetylcholine
 - b. Actin/myosin
 - c. Adduction/abduction
 - d. Anaerobic glycolysis
 - e. Antagonist
 - f. Axon terminal
 - g. Creatine phosphate
 - h. Endomysium
 - i. Fixator
 - j. Isometric contractions
 - k. Motor neurons
 - l. Muscle fatigue
 - m. Neurotransmitters
 - n. Sarcolemma
 - o. Sarcomere
 - p. Sarcoplasmic reticulum
 - q. Synaptic cleft
 - r. Synergist
 - s. Tetanus
 - t. Thick/thin filaments
 - u. Twitch